

5000 Series Repair Couplings

Designed for resistance to heavy earth loads and shear forces, and provides improved pipe alignment.



TECHNICAL SPECS & CODE APPROVALS

Gasket

- Manufactured to meet the material requirements of:
 - CSA B602 - mechanical couplings for drain, waste, vent pipe and sewer pipe
 - ASTM D 5926 - Standard Specification for Poly Vinyl Chloride (PVC) Gaskets for Drain, Waste, and Vent (DWV), Sewer, Sanitary, and Storm Plumbing Systems
 - ASTM C 1173 - Standard Specification for Flexible Transition Couplings for Underground Piping Systems
- Hardness, Shore "A", Inst. +5.....65
- Tensile Strength, Min. psi 1000
- Elongation at Rupture, Min. %..... 250
- Tear Strength, Min..... 150 lb/in.
- Brittleness Temperature..... -40°F

Clamps

- Clamp Band - 316 Stainless Steel
- 6" and larger couplings incorporate two nut and bolt take-up points per band
- Installation torque 60" lbs

Shear Ring

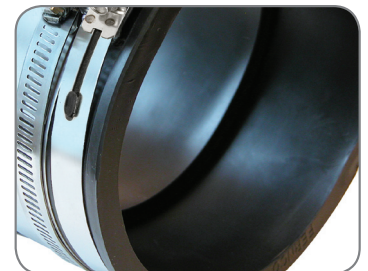
- .012" Thick, 300 Series Stainless Steel
- Width manufactured according to coupling width (1.50", 2.13", or 4")
- Length manufactured according to coupling diameter
- Clamps spot welded in place

Coupling

- Manufactured to conform to the performance requirements of:
 - ASTM C 1173 - standard specification for flexible transition couplings for underground piping systems
 - CSA B602 - mechanical couplings for drain, waste, vent pipe and sewer pipe



Nut and Bolt Clamps



Molded-in Bushings



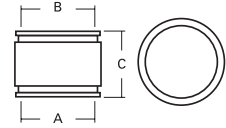
.012" Stainless Steel Shield



Resistance to Heavy Earth Loads



5000 Series Repair Couplings



5001 RC Series - Clay to Clay

Fernco Part No.	Mission Part No.	A		B		C	
		in.	mm	in.	mm	in.	mm
5001-44RC	MR01 44 ARC	5.29	134	5.29	134	4.10	104
5001-44WCRC	N/A	5.51	140	5.51	140	3.97	101
5001-66RC	MR01 66 ARC	7.50	191	7.50	191	6.00	152
5001-88RC	MR01 88 ARC	9.65	245	9.65	245	6.00	152

5006 RC Series - Concrete to Cast Iron or Plastic

Fernco Part No.	Mission Part No.	A		B		C	
		in.	mm	in.	mm	in.	mm
5006-1010RC	MR06 1010 ARC	12.60	320	10.60	269	6.37	162
5006-1212RC	MR06 1212 ARC	16.29	414	12.39	315	6.30	160
5006-66RC	MR06 66 ARC	7.66	195	6.39	162	5.86	149
5006-88RC	MR06 88 ARC	10.25	260	8.50	216	5.93	151

5002 RC Series - Clay to Cast Iron or Plastic

Fernco Part No.	Mission Part No.	A		B		C	
		in.	mm	in.	mm	in.	mm
5002-44RC	MR02 44 ARC	5.14	131	4.52	115	3.96	101
5002-64RC	MR02 64 ARC	7.34	186	4.29	109	5.56	141
5002-64WCRC	N/A	7.84	199	4.5	114	5.96	151
5002-66RC	MR02 66 ARC	7.35	187	6.61	168	5.76	146
5002-88RC	MR02 88 ARC	9.63	245	8.43	214	5.74	146
5002-1010RC	MR02 1010 ARC	12.40	315	10.60	269	5.90	150
5002-1212RC	MR02 1212 ARC	14.50	368	12.50	318	6.37	162
5002-1515RC	MR02 151 ARC	18.14	461	15.60	396	6.85	174
5002-1818RC	MR02 1818 ARC	21.90	556	18.88	480	9.63	245

5051 RC Series - Asbestos Cement Fibre (AC) or Ductile Iron to CI or PL

Fernco Part No.	Mission Part No.	A		B		C	
		in.	mm	in.	mm	in.	mm
5051-64RC	N/A	6.84	174	4.30	109	5.93	151
5051-88RC	MR51 88 ARC	9.12	232	8.49	216	5.98	152

5004 RC Series - Concrete to Concrete

Fernco Part No.	Mission Part No.	A		B		C	
		in.	mm	in.	mm	in.	mm
5004-44RC	MR05 44 ARC	5.51	140	5.51	140	3.97	101
5004-66RC	MR04 66 ARC	7.58	193	7.58	193	5.94	151
5004-88RC	MR04 88 ARC	10.38	264	10.38	264	5.90	150
5004-1010RC	MR04 1010 ARC	12.40	315	12.40	315	6.00	152
5004-1212RC	MR04 1212 ARC	15.38	391	15.38	391	6.40	163

5056 RC Series - CI, PL, Copper, or Steel to CI, PL, Copper, or Steel

Fernco Part No.	Mission Part No.	A		B		C	
		in.	mm	in.	mm	in.	mm
5056-1010RC	MR56 1010 ARC	10.63	270	10.63	270	5.89	150
5056-1212RC	MR56 1212 ARC	12.52	318	12.52	318	6.32	161
5056-1515RC	MR56 1515 ARC	15.44	392	15.44	392	10.00	254
5056-1818RC	MR56 1818 ARC	19.00	483	19.00	483	9.89	251
5056-2424RC	N/A	25.10	638	25.10	638	9.89	251
5056-43RC	MR56 43 ARC	4.46	113	3.52	89	4.03	102
5056-44RC	MR56 44 ARC	4.58	116	4.58	116	4.02	102
5056-64RC	MR56 64 ARC	6.61	168	4.46	113	5.75	146
5056-66RC	MR56 66 ARC	6.60	168	6.60	168	5.74	146
5056-88RC	MR56 88 ARC	8.64	219	8.64	219	6.04	153